

Local Response

A Proclamation of a **Local Health Emergency**

What kind of HELP is needed?

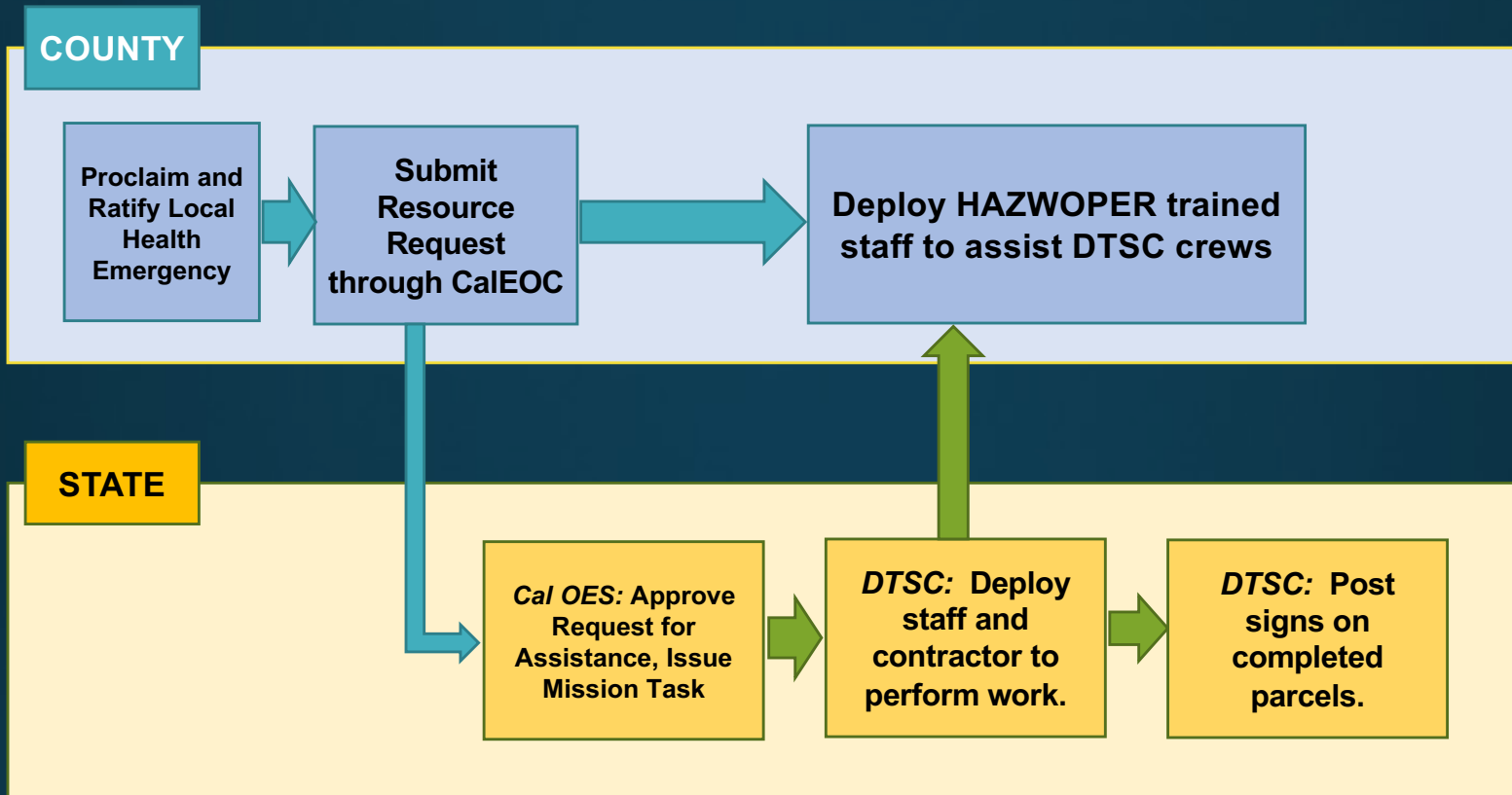
Proclaim a local state of emergency

Request State/Federal Assistance

Request Private Property Debris Removal

Urgency Ordinance

Proclaim a Local Health Emergency



Request Process

County Continues Engagement



Proclaim a Local Health Emergency for the City/County



Collect, review and approve Right of Entry (ROE) forms



Coordinate with local, state, and federal agencies regarding regulatory requirements for debris operations.



Organize Non-Governmental Organizations (NGO)



Review completed work for each APN to verify all work is completed and sign off so that APN can be returned to Homeowner.

Disaster Debris Types

- **PHASE I: HHW**
 - Paints
 - Cleaners
 - Fuel
 - Acute asbestos
 - Lithium-ion batteries
- **PHASE II: Ash & Debris**
 - Asbestos
 - Construction / Concrete / Household Contents
 - Electronics
 - Vehicles & Tires
 - Remains
 - Unexploded Ordinance (UXO)



Other Types of Debris: Vegetation, Sediment, Dead animals

Debris Related Health & Safety Concerns



3 Paths to Human Exposure



Ash & Debris



Where Might Asbestos Be in the Home?

Note: Asbestos usage has declined dramatically; some uses have been banned. Asbestos might be found in older homes and certain products. (See page 5)



- (A) Exterior Surfaces**
1. Deck Undersheeting
 2. Cement Asbestos Board Siding and Undersheeting
 3. Roof Felt and Shingles
 4. Window Putty
- (B) Automobiles**
1. Brake Linings, Clutch Facings, and Gaskets
- (C) Insulation**
1. Vermiculite Attic Insulation
 2. Batt Insulation
 3. Vermiculite Wall Insulation

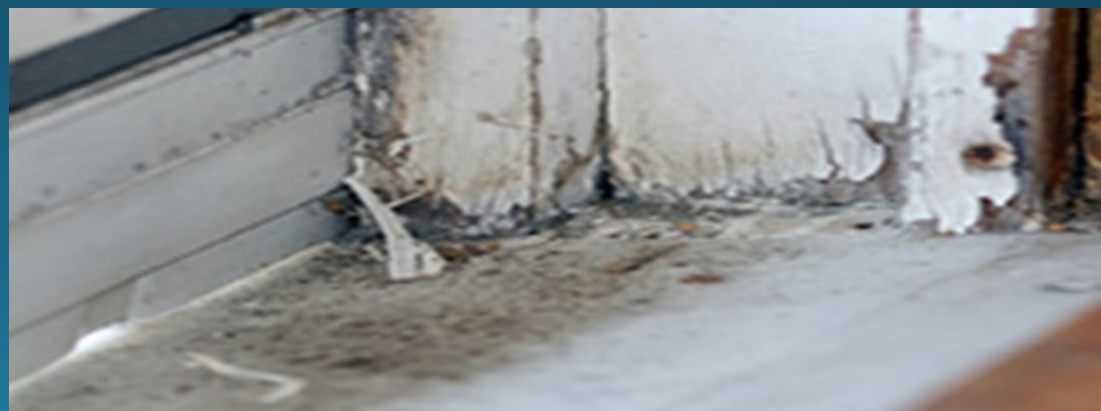
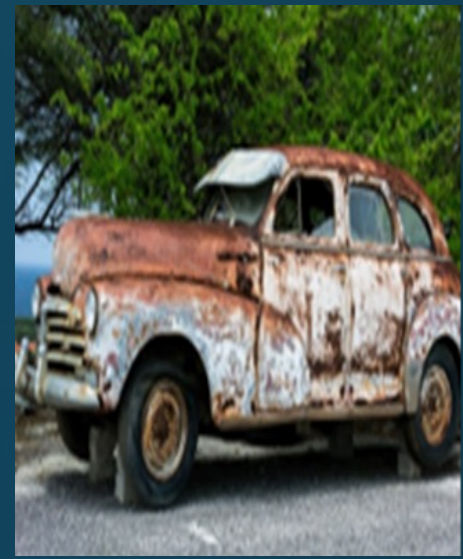
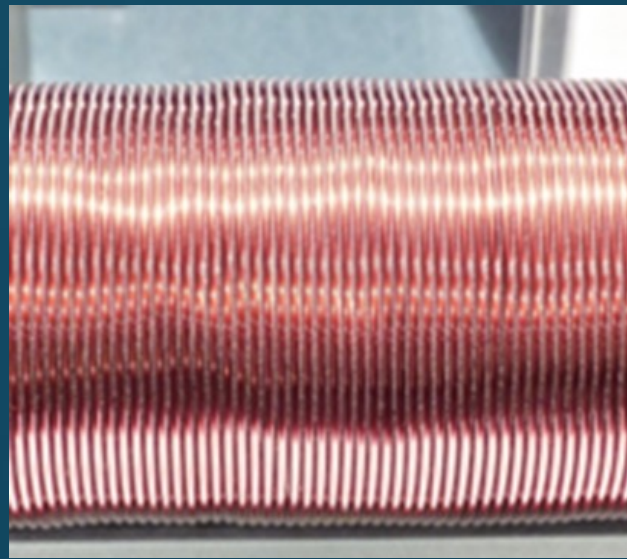
- (D) Flooring**
1. Vinyl Asbestos Sheets, Tiles, and Undersheeting
- (E) Boilers, Heaters and Piping**
1. Heat Source Covering
 2. Air Duct Lining
 3. Door and Cover Gaskets
 4. Pipe Lagging
 5. Wall Gaskets and Lining

- (F) Interior Surfaces**
1. Sprayed-on Acoustical Ceilings
 2. Acoustical Tiles
 3. Textured Paint
 4. Heat Reflectors (Woodstoves)
- (G) Electrical Equipment**
1. Lamp Sockets
 2. Outlet and Switchboxes
 3. Insulation on Knob and Tube Wiring
 4. Recessed Lighting
 5. Main Panel and Fuse Boxes

- (H) Built-in Equipment**
1. Water Heaters
 2. Range Hoods
 3. Clothes Dryers
 4. Dishwashers
- (I) Appliances**
1. Refrigerators, Freezers, Portable Dishwashers, Toasters, Slow-cookers, Ovens, Hair Dryers (not shown) and Portable Heaters (not shown)
- (J) Miscellaneous**
1. Fireplace Logs
 2. Asbestos Hot Pads
 3. Asbestos Gloves

Toxic Metals Found in Fire Debris

- ARSENIC
- COPPER
- CHROMIUM
- LEAD



Debris Streams

Landfills are reviewed and approved at the early stages of the project.

- **Asbestos**

- Must be taken to a lined Class III Landfill, permitted to accept asbestos

- **Chimneys**

- If not containing asbestos, will be removed with ash/debris
- If containing asbestos, must be taken to a permitted and lined Class III Landfill

- **Vehicles**

- Recycled as metal once the appropriate adjudication is completed

- **Metals**

- Taken to a metal recycling facility

- **Ash/Debris**

- This is disposed of at an approved landfill

- **Concrete**

- Recycled or transported to an approved landfill

- **Soil**

- Disposed of at an approved landfill

**Hazardous Materials – Sometimes not all hazardous materials are located and removed earlier in the process. If found during debris removal, these are set aside for DTSC to conduct a pick-up.*

Soil Sampling Confirmation (mg/kg)

	Sb	As	Ba	Be	Cd	Cr	Co
Regulatory Screening Levels	31	0.11	9,999	16	7.1	2,499	23
Background Level	0.38	4.9	210	0.44	1.1	51	14
Tv Area Cleanup Goal	31	4.9	9,999	16	7.1	2,499	23

Cu	Pb	Hg	Mo	Ni	Se	Ag	Tl	V	Zn
2,499	80	1	390	820	99	390	5	390	4,999
68	74	0.4	2.3	44	0.7	0.17	0.10	90	210
2,499	80	1.0	390	820	99	390	5.0	390	4,999

- DTSC, Office of Human Health and Ecological Risk Assessment, Note 3, June 2020 (HERO Note 3)
- CalEPA, Revised California Human Health Screening Levels (CHHSL), September 2010
- California Hazardous Waste Total Threshold Limits Concentration (TTLC), California Code of Regulations, Title 22, Chapter 11, Article 3
- U.S. EPA Regional Soil Levels (RSL)

Personal Protective Equipment (PPE)

- Respirator
- N-95 mask
- Gloves
- Long shirts and pants
- Shoe coverings
- Safety eyewear

***Wear
Protective
Gear***

WHO PAYS?

Public program

- Federal/State/ Local partnership
- Insurance + public disaster funding

PRIVATE (residential Phase II)

- Private/ Insurance

COMMERCIAL

- Special Inclusion request made by county
- FEMA may fund

INSURANCE**

- The County is responsible for collecting insurance
- Only collect "debris removal" portion of insurance policy (if any)
- Do not take all insurance proceeds
- No charge to Homeowner if there is no insurance