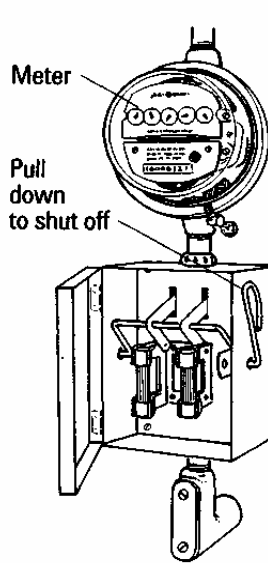
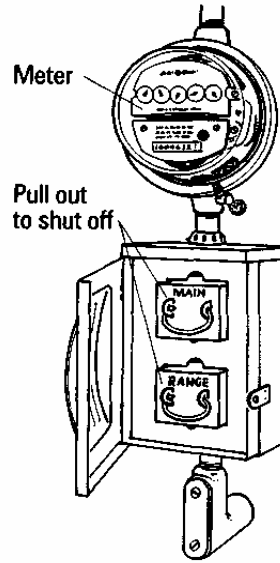


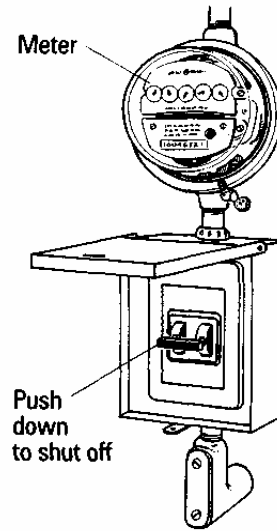
ELECTRIC SHUT-OFFS



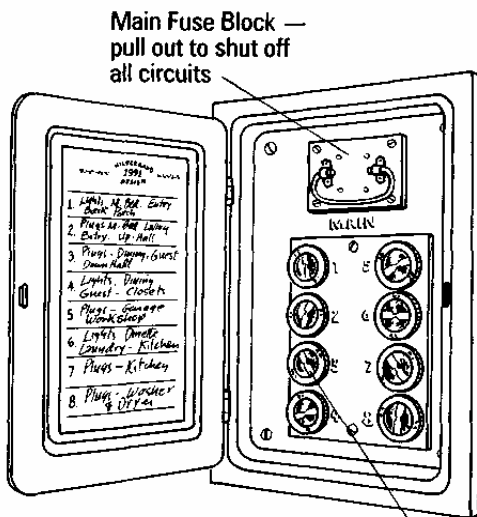
FUSE TYPE



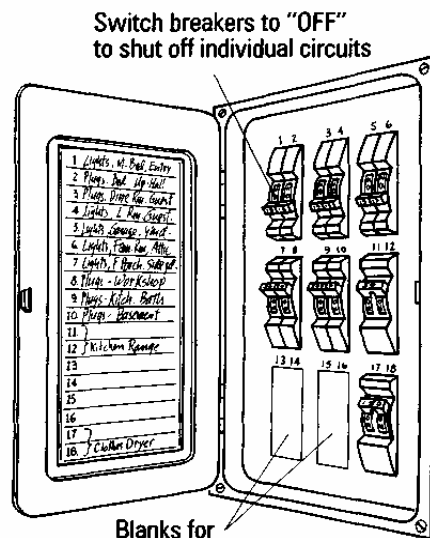
FUSE DRAWER TYPE



BREAKER TYPE



FUSE BOX



BREAKER PANEL

Remember: When turning off the electricity after a disaster, turn off the individual circuits first and then the main circuit. When you want to restore power, turn on the Main circuit first and then the individual circuits.

Cupertino Office of Emergency Services
408 777-3335
www.cupertino.org/emergency