



# Self-Assessment Tool

## • Tier 3 – Fulfilling A Broader Community Role

Agency \_\_\_\_\_

Completed by \_\_\_\_\_

Date \_\_\_\_\_

INSTRUCTIONS: Using colored three (3) colored pens (red/yellow/green), mark each box to indicate if that element or topic is a planning gap (RED), a work in progress (YELLOW) or planning is complete (GREEN).

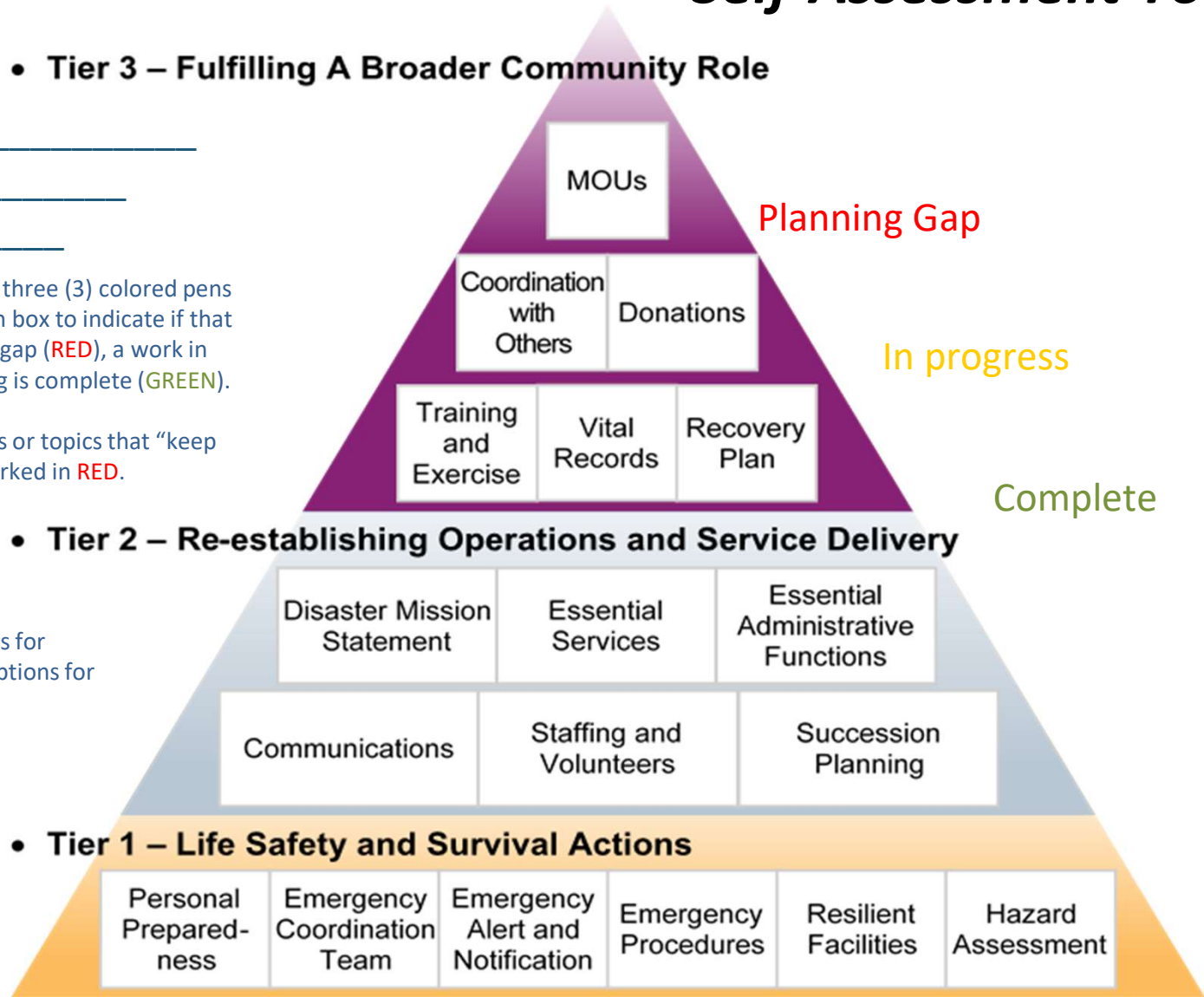
Any priority planning elements or topics that “keep you up at night” should be marked in RED.

## • Tier 2 – Re-establishing Operations and Service Delivery

REFERENCE DOCUMENT:

See attached table of elements for definitions and further descriptions for each element box

## • Tier 1 – Life Safety and Survival Actions



\* Early concepts of this tool were developed by Swardenski Consulting with support from Silicon Valley Community Foundation

### ***Hierarchy of Organizational Preparedness with Emergency Planning Elements***